

Yamaha Motor Solutions India Private Limited

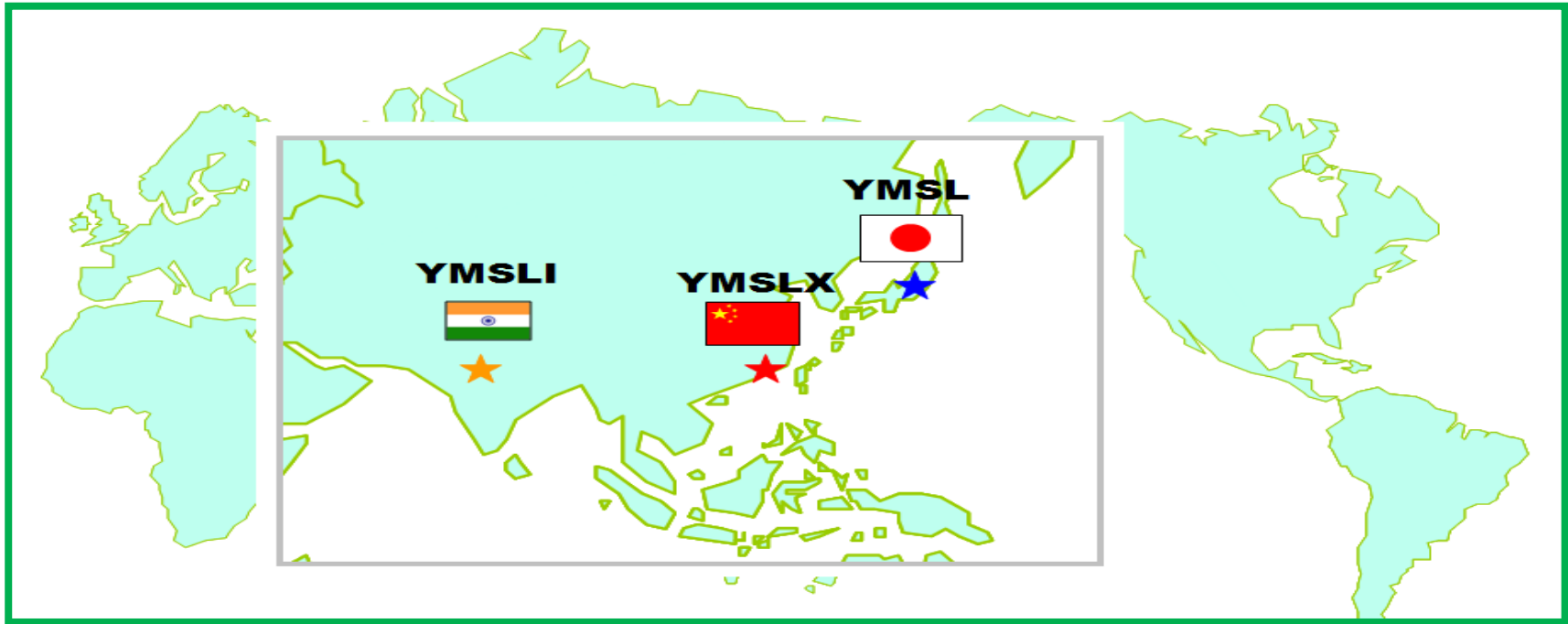
Vision

**We are committed as
world class team to provide total
IT solutions creating value
and surpassing client's expectations**

Mission

**We consistently deliver
best fit global IT services & solutions
to improve client's competitive advantage**

YAMAHA MOTOR SOLUTIONS CO.,LTD.



GREATER NOIDA OFFICE



CHENNAI OFFICE



- Yamaha Motor Solutions India Pvt. Ltd. (YMSLI) – CMMI L-3 ,established in 2002,is a subsidiary of Yamaha Motor Solutions Group, Japan.
- State-of-The-Art Development Center & capable for 24 x 7 operations
- We are a Team of 300 Qualified Engineers ,MBA's and MCA's.
- Successful experience of implementing and maintaining Branded ERP Solutions (Microsoft - Navision)

YMSLI Service Offerings

IBM
Tech-
nology

Microsoft
Business
Solution

Open Source
Technology

Java

Support
Services

Lotus Notes
Domino
Websphere

Microsoft
Navision

Share
Point
Portal

Android,
IOS ,
HTML &
Web
Testing

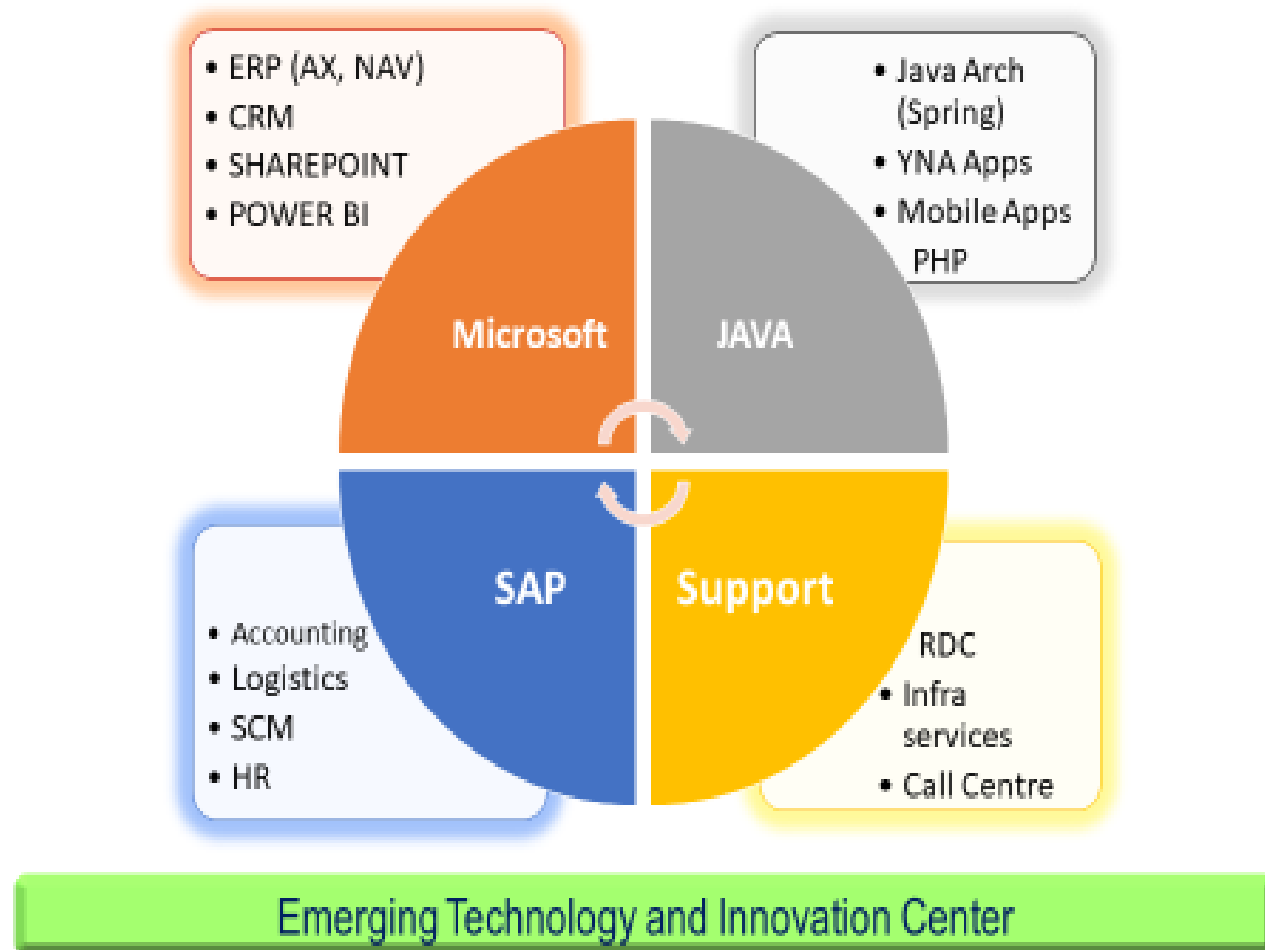
Remote
Data
Centre
(24*7)

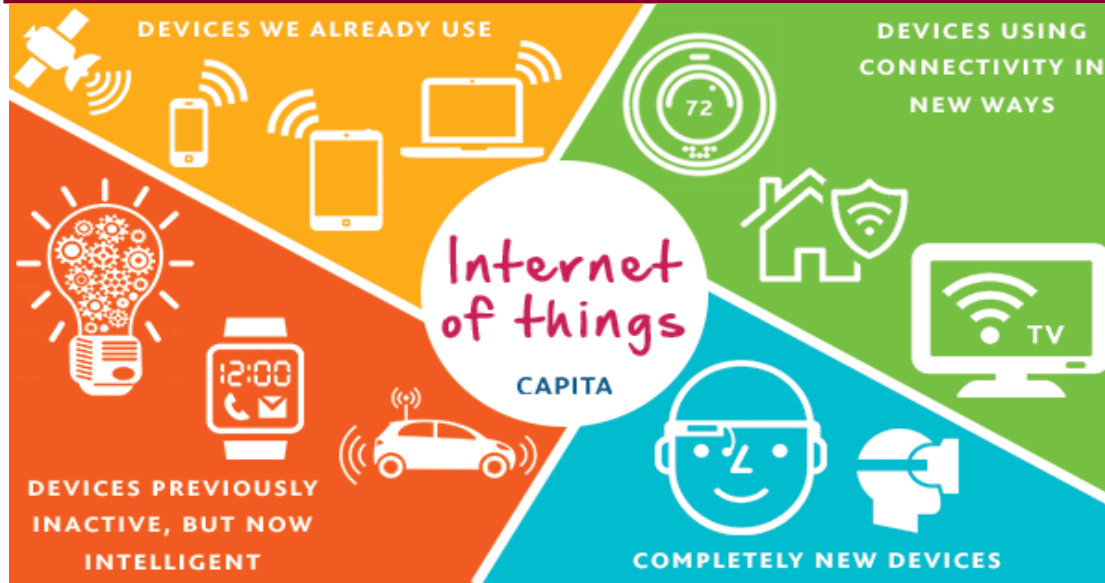
Yamaha New
Architecture
(Framework)

Linux
PHP
MySQL
Apache

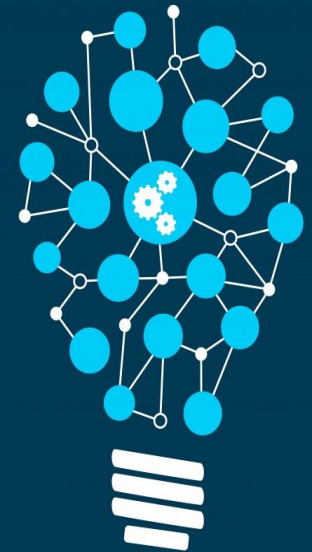
Call
Centre
Operation

Infra-
structure
support
services

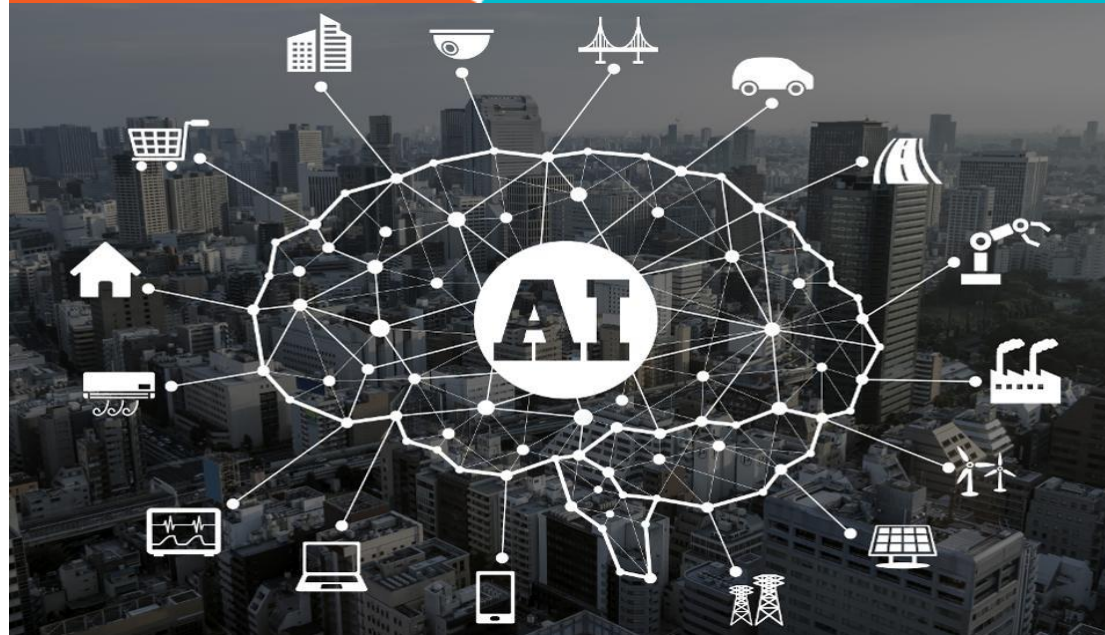




MACHINE LEARNING



AUTONOMOUS DRONES



Partners

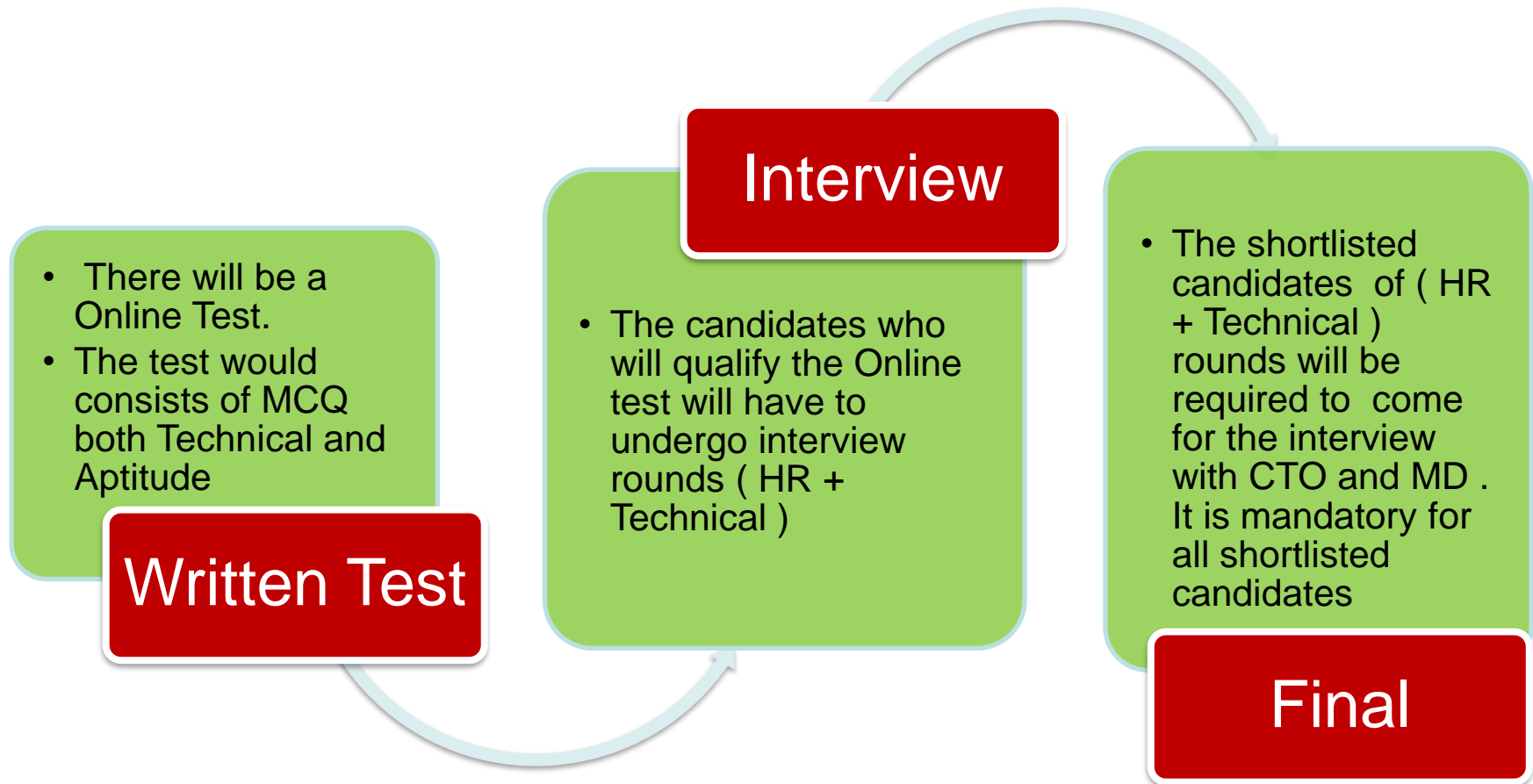


Security Solutions
Advanced Infrastructure Solutions
Networking Infrastructure Solutions
Microsoft Business Solutions



Recruitment Process

**Yamaha Motor Solutions India Private Limited
Human Resources Team**



**6 months Training is divided into 2 parts
(Foundation Training & On the Job Training)**

Foundation Training
(First Three Months)

On The Job Training
(Last Three Months)

Quality, Soft Skills, Basics of
Technology

The Group will be segregated in
Practice-wise as per skills and will be
trained in respective Practice
followed by concern technical
certification.

- You'll be paired with a 1:1 mentor, receive support from your manager and have access to the entire YMSLI employee community to ensure your success.
- You'll hit the ground running—most interns ship code or contribute to real-world projects in their first six months.
- As a key member of a versatile team, you will work on a specific project critical to YMSLI needs. We need our engineers to be versatile, and enthusiastic in addressing new problems as we continue to push technology forward.
- You will design, test, deploy and maintain software solutions as you grow and evolve during your tenure with the company.
- Analyze information and evaluate results to choose the best solution to effectively solve problems.
- We'll help you have fun outside of work with events, community connection and networking events with YMSLI leaders and other activities.

- **5 days working**
- **Healthcare & Health Awareness Sessions**
- **Rewards & Recognition**
- **Maternity leave & Paternity Leave**
- **Discount on Product & Services**
- **Sports Tournament (Cricket, foosball, table tennis etc.)**
- **Subsidized Food & Drinks**
- **Loyalty Awards**
- **Gifts (birthday, Diwali) & Celebrations**
- **Professional Certifications**
- **Japanese Language Training**
- **Opportunity for CSR & Go Green Initiative**
- **One to one interaction session with MD**
- **Onsite Opportunity**
- **Work on emerging technologies at Innovation Lab**

- The Training Period will be of 6 months on CTC of INR 8,00,000/- per annum.
- Service Bond of Two Years and Bond Penalty amount is 1 lac.
- Submit All Original documents on day of joining.
- Location – Gr. Noida



Thank You